

Touch Navigation

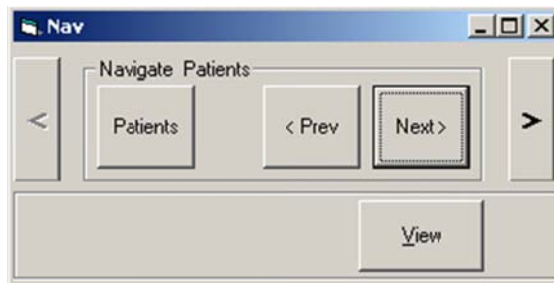
Touch navigation features have been added to support RESource usage with tablets and touch screen interfaces (i.e. iPad). The Nav window allows navigation through patients and cycles in Patient Explorer. Once you have entered search criteria and pressed the **Find** button, a patient or list of patients meeting your criteria will appear in the Patient Explorer.



To View Patients through Touch:

When the button displays **Patients**, it will navigate through the selected list in Patient Explorer.

Click **Next** or **Prev** (previous) to navigate through the list of patients. As you navigate, the (+) sign to the left of the patient name expands the patient folder revealing all cycles created under the patient – the current/active cycle will be selected by default. Clicking Next again will close the current patient folder and open the next.



Click the **View** button to display the selected cycle's stim comments. Clicking the up or down arrow will move through the displayed comments.

Date	Comment
06/02/11	
06/04/11	
06/11/11	plan opk
06/15/11	
06/16/11	
06/17/11	start medrol doxy and endometin
06/21/11	pt must pick up prog supp@ddb
06/22/11	
06/24/11	
07/01/11	

To view Cycles through Touch:

To navigate through the cycles under a selected patient, click the **Patient** (red arrow) button in the Touch window. The button will change to read **Cycle** (blue arrow) and reveal all the cycles created under the patient.

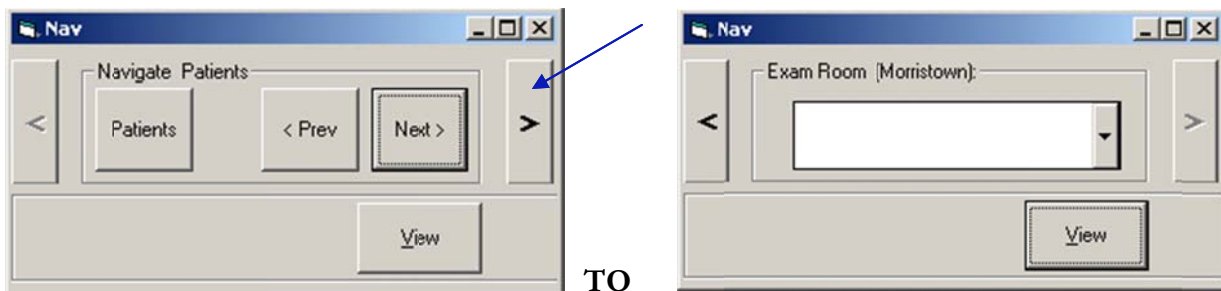


Once changed to Cycle, a user can navigate through the cycles of this patient using the **Prev** and **Next** buttons.

Click the **View** button to display the stim comments of the selected cycle.

When viewing multiple cycles, the cycle that is active will have the center of its bar highlighted. Each cycle is displayed with its cycle number, cycle type and cycle status. When viewing the cycles of a patient through the Touch window, the current cycle is the first displayed. From this point, a user can navigate to the previous or next

Clicking the > button on the Nav window will scroll to the Exam Room view.



Clicking on the dropdown will display all available exam rooms. If a patient has been signed into an exam room (via Sign In), select an exam room from the dropdown will display the patient in the Patient Explorer.

